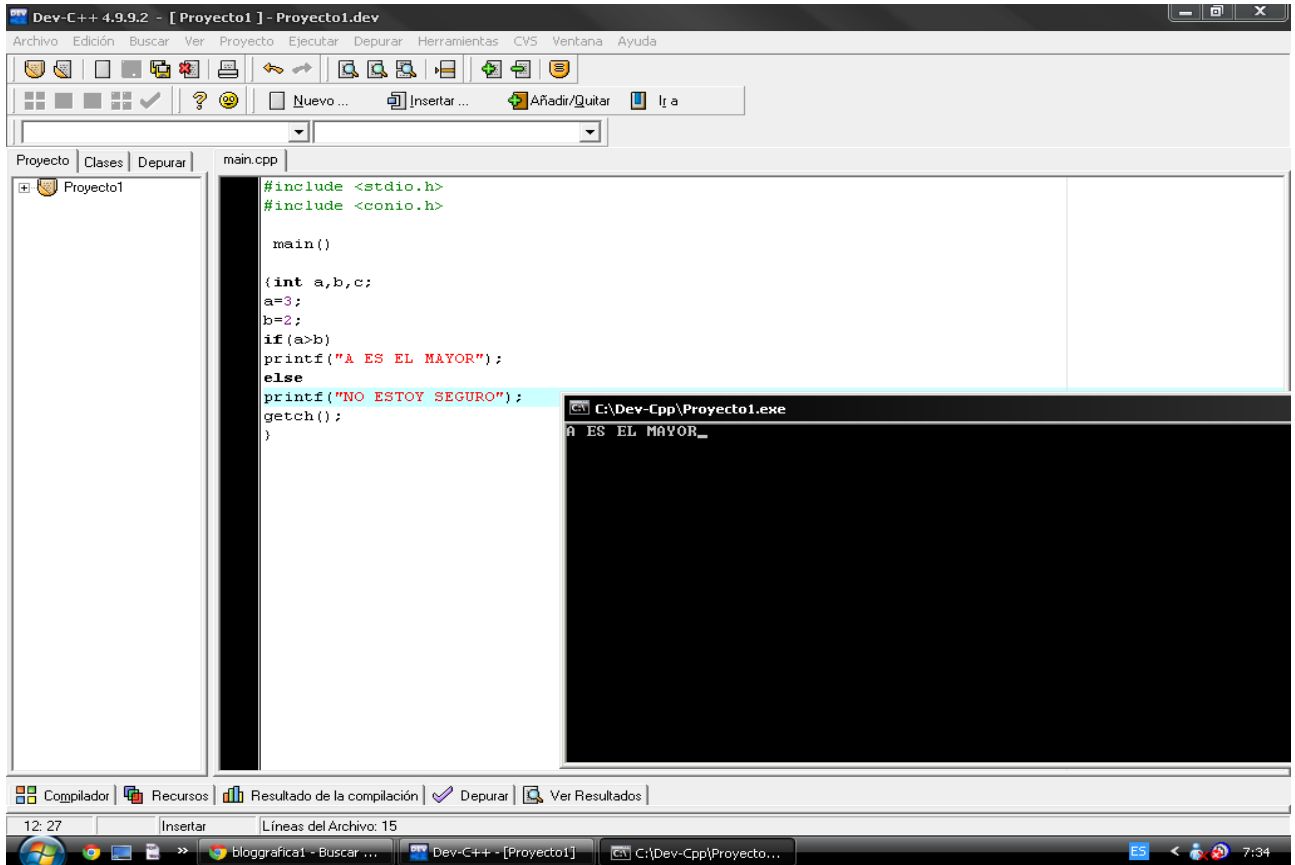


DIAGRAMA DE FLUJO

COMANDO "IF"

IF SIMPLE



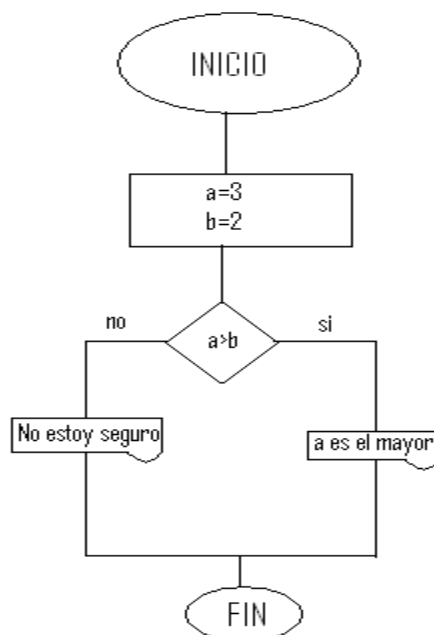
The screenshot shows the Dev-C++ 4.9.9.2 IDE with a project named 'Proyecto1'. The main.cpp file contains the following code:

```
#include <stdio.h>
#include <conio.h>

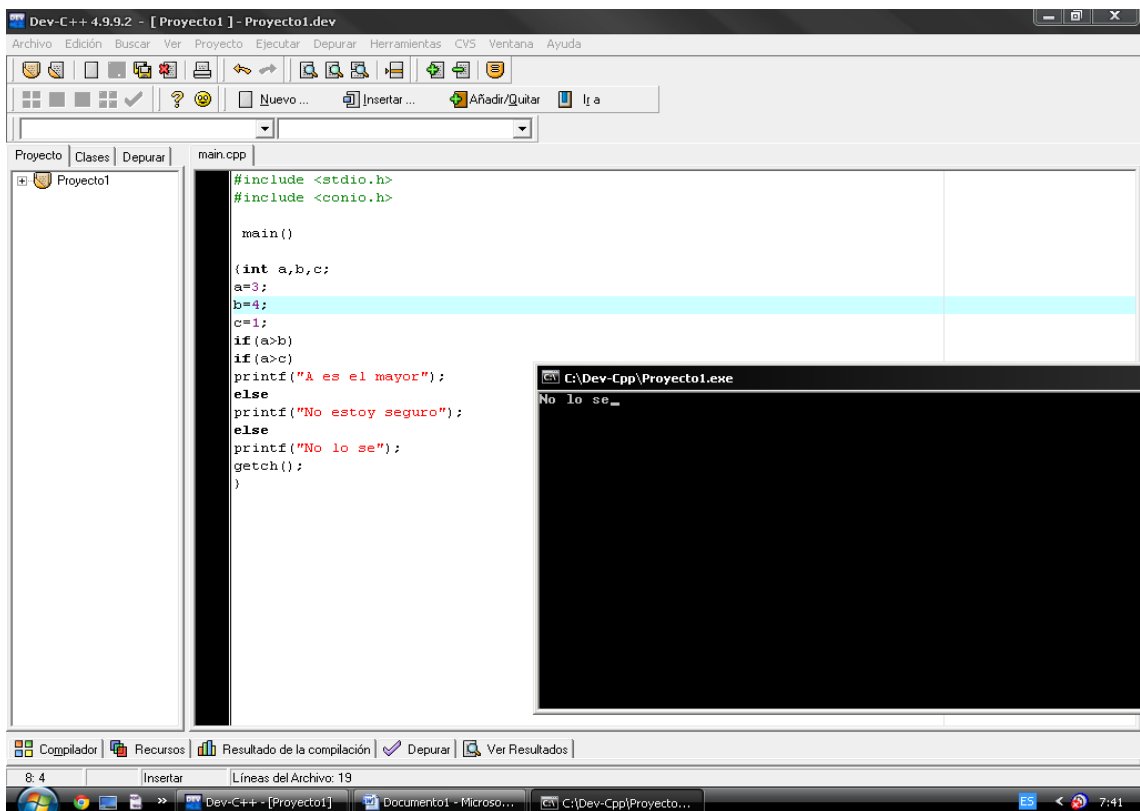
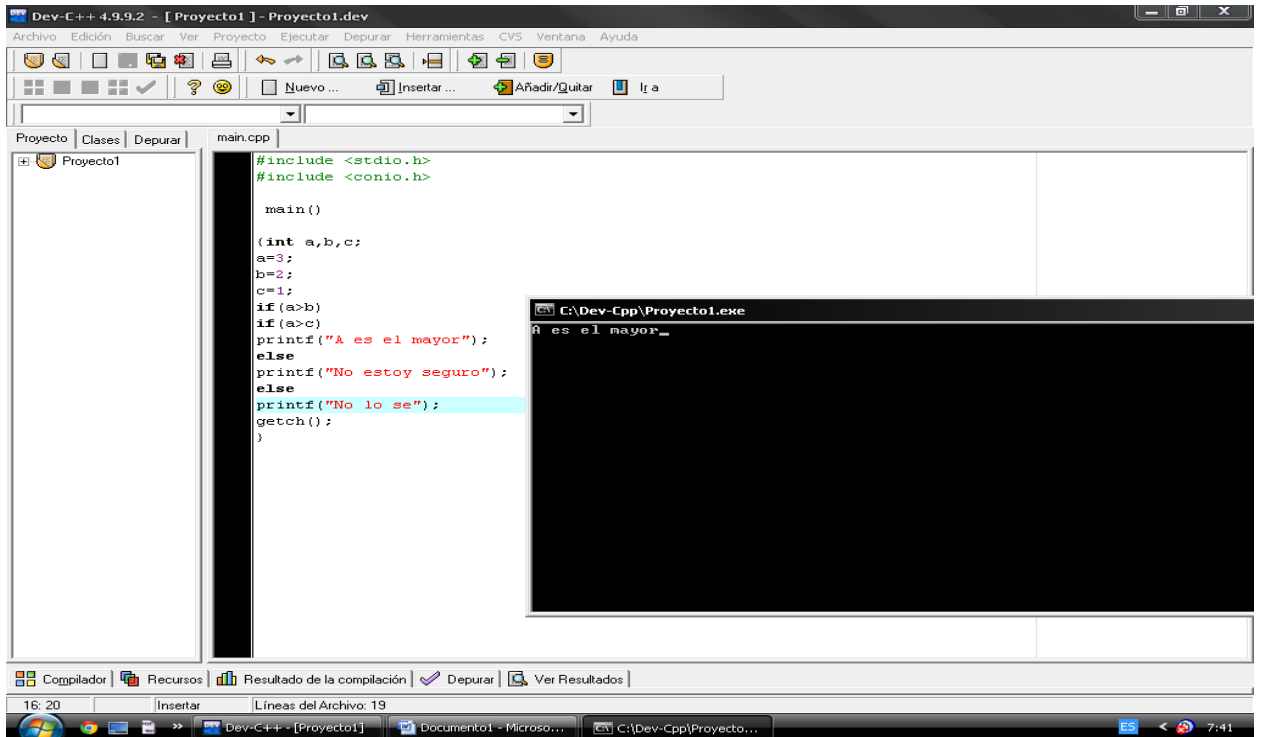
main()

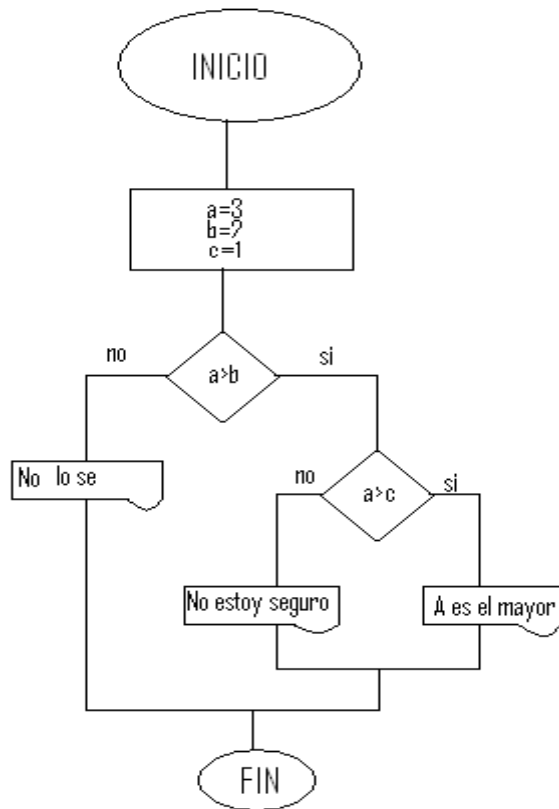
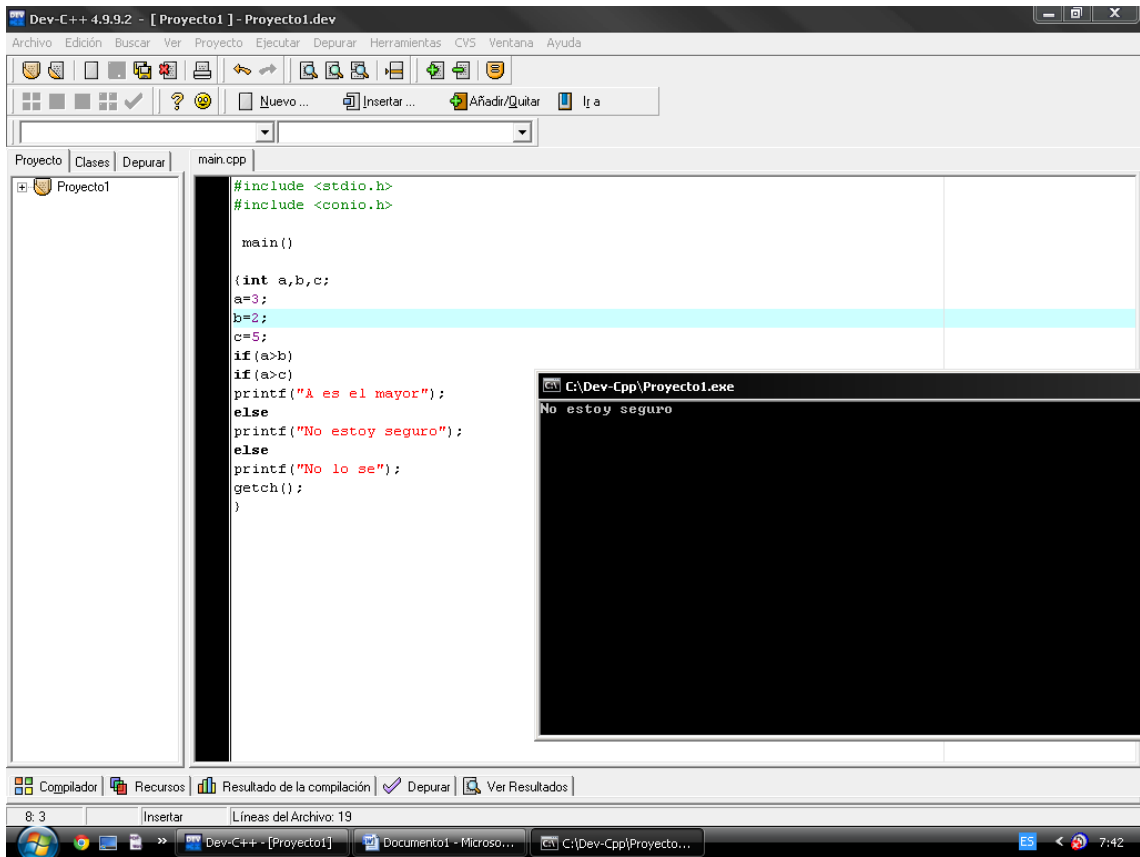
{int a,b,c;
a=3;
b=2;
if(a>b)
printf("A ES EL MAYOR");
else
printf("NO ESTOY SEGURO");
getch();
}
```

The execution window shows the output: "A ES EL MAYOR_".



IF DOBLE





IF ANIDADO

